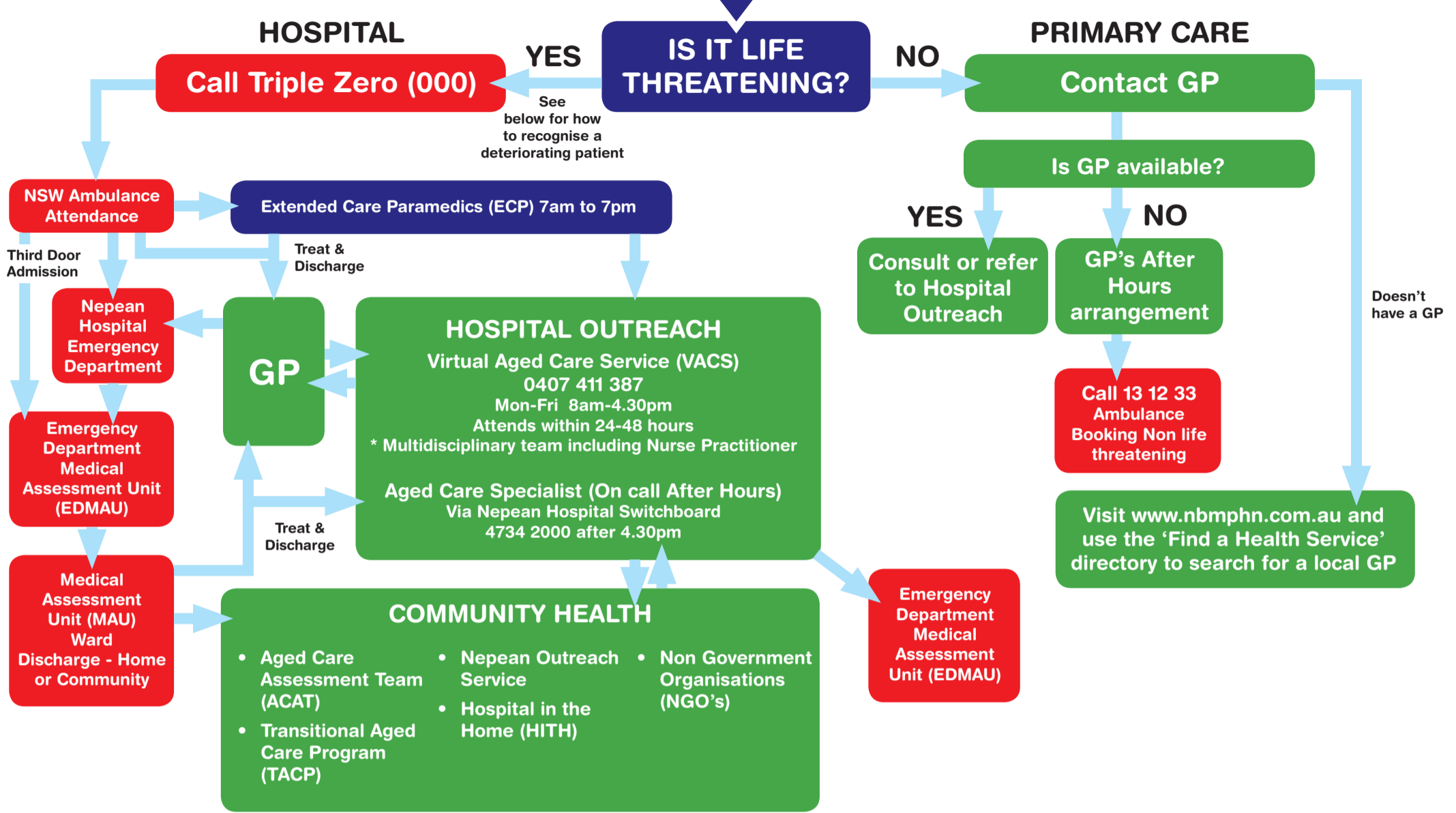


Rapid Health Decline in the Older Person – what to do?

Local Nepean Region Pathway – A local pathway to support those who care for older people with acute care needs.

Unexpected deterioration • Unexplained & sudden changes within hours or days



Recognition of a Deteriorating Patient

LIFE THREATENING CONDITIONS include	RED (DANGER)	YELLOW (CAUTION)
Breathing difficulties	Respiratory rate $\leq 5/\text{min}$ or $\geq 30/\text{min}$	Respiratory rate $\leq 10/\text{min}$ or $\geq 25/\text{min}$
Chest pain or chest tightness	Respiratory effort Obvious distress and /or cyanosis	Respiratory effort Unusually labored or noisy breathing
Sudden onset of weakness, numbness or paralysis of the face, arm or leg	Level of responsiveness Responding to Painful stimuli or Unresponsive	Level of responsiveness Responding to Verbal stimuli
Unconsciousness	Heart Rate $\leq 40/\text{min}$ or ≥ 140	Heart Rate $\leq 50/\text{min}$ or $\geq 120/\text{min}$
Uncontrollable bleeding	Systolic Blood Pressure $\leq 90\text{mmHg}$ systolic or $\geq 200\text{mmHg}$ systolic	Systolic Blood Pressure $\leq 100\text{mmHg}$ systolic or $\geq 180\text{mmHg}$ systolic
Sudden collapse or unexplained fall	Blood Glucose Level $\leq 4\text{mmol}$ & unresponsive or $\geq 28\text{mmol}$ or HI	Blood Glucose Level $\leq 4\text{mmol}$ or $\geq 14\text{mmol}$
Unexplained fitting		Temperature $\leq 35.5^\circ$ or $\geq 38.5^\circ$
Fall from a great height		
Severe burns		

Reference: Information sourced from NSW Ambulance (2016) as part of the Older Persons Care Consortium.

Rapid Health Decline in the Older Person – What to do?

Local Nepean Region Pathway – A local pathway to support those who care for older people with acute care needs.

This pathway was developed as an outcome from the Older Persons Care Consortium (August 2015, Penrith).

Learn more about the Older Persons Care Consortium at www.nbmphn.com.au/PenrithForum

Network at www.nbmphn.com.au or contact on telephone 4708 8100.

View an interactive version of the pathway online at www.agedcarewentworth.com.au.

Wentworth Healthcare Limited (ABN 88 155 904 975) as Nepean Blue Mountains PHN.

097_0916